



Royal Scottish Country Dance Society
Southwest Washington State Branch

SUMMER PICNIC

Sunday, July 10, 2011

Noon to 4:00 p.m.

Lunch at 1:00 ~ Dancing after lunch

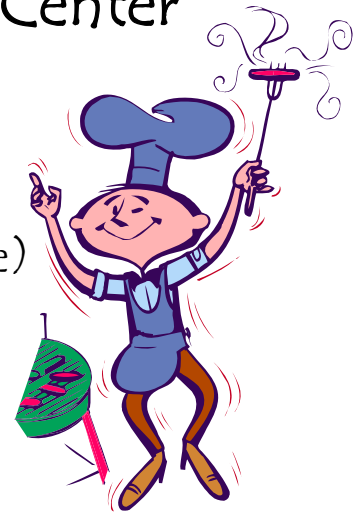
At the Picnic Shelter behind the

Fort Vancouver Visitor Center

What to bring:

- ◆ Your family
- ◆ A main dish for yourself (no grill available)
- ◆ A dish to share
- ◆ Tableware
- ◆ Games

Water provided



Directions: From I-5, take Exit 1-C (Mill Plain Blvd.) and head east. Turn south onto Ft. Vancouver Way. At the traffic circle, go east on Evergreen Blvd. and follow signs to the Visitor Center (1501 E. Evergreen Blvd.)

Information: Linda Mae 360-609-0623; Liza 360-887-1888